

T 215, R 6E, M W

A	2	3	4	5	6	7	8	9	10	11	12	13	14	15	16	17	18	19	20	21	22	23	24	25
B	+	+	+		+	+	+		+	+	+		+	+	+		+	+	+		+	+	+	+
C	+	6	+		+	5	+		+	4	+		+	3	+		+	2	+		+	1	+	+
D	+	+	+		+	+	+		+	+	+		+	+	+		+	+	+		+	+	+	+
E	+	+	+		+	+	+		+	+	+		+	+	+		+	+	+		+	+	+	+
F	+	+	+		+	+	+		+	+	+		+	+	+		+	+	+		+	+	+	+
G	+	7	+		+	8	+		+	9	+		+	10	+		+	11	+		+	12	+	+
H	+	+	+		+	+	+		+	+	+		+	+	+		+	+	+		+	+	+	+
J	+	+	+		+	+	+		+	+	+		+	+	+		+	+	+		+	+	+	+
K	+	+	+		+	+	+		+	+	+		+	+	+		+	+	+		+	+	+	+
L	+	18	+		+	17	+		+	16	+		+	15	+		+	14	+		+	13	+	+
M	+	+	+		+	+	+		+	+	+		+	+	+		+	+	+		+	+	+	+
N	+	+	+		+	+	+		+	+	+		+	+	+		+	+	+		+	+	+	+
O	+	+	+		+	+	+		+	+	+		+	+	+		+	+	+		+	+	+	+
P	+	19	+		+	20	+		+	21	+		+	22	+		+	23	+		+	24	+	+
Q	+	+	+		+	+	+		+	+	+		+	+	+		+	+	+		+	+	+	+
R	+	+	+		+	+	+		+	+	+		+	+	+		+	+	+		+	+	+	+
S	+	+	+		+	+	+		+	+	+		+	+	+		+	+	+		+	+	+	+
T	+	30	+		+	29	+		+	28	+		+	27	+		+	26	+		+	25	+	+
U	+	+	+		+	+	+		+	+	+		+	+	+		+	+	+		+	+	+	+
V	+	+	+		+	+	+		+	+	+		+	+	+		+	+	+		+	+	+	+
W	+	+	+		+	+	+		+	+	+		+	+	+		+	+	+		+	+	+	+
X	+	31	+		+	32	+		+	33	+		+	34	+		+	35	+		+	36	+	+
Y	+	+	+		+	+	+		+	+	+		+	+	+		+	+	+		+	+	+	+
Z	+	+	+		+	+	+		+	+	+		+	+	+		+	+	+		+	+	+	+

LEGEND

○ = Corner having information on form 7100-52 in this file.

Legend Confirms to Reporting Form 7/28/79

FILING INSTRUCTION

File 7100-52 card record by letter and number coordinates behind the file guide for the township in which it falls.

File the 7100-52 card record by letter and then by number i.e., all A cards first, then B cards etc.

The first card behind the file guide (if data have been obtained and recorded) will be card A-1 for N.W. Township Corner, then card A-2 for 1/16 corner then card A-3 for 1/4 corner etc.

USDA-FOREST SERVICE

Index
File No. 2155

CORNER RECORD (SEARCH)

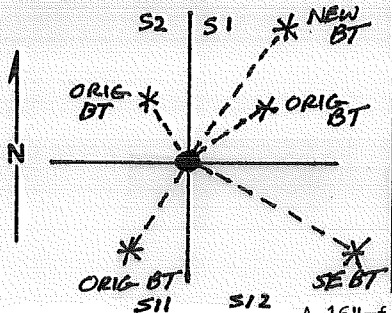
(Ref. FSM 7151.4)

Tract or
Survey No. _____ Cor.
No. E-21

T 21 S R. 6 E. R.D. Bend County Deschutes NW Sec. 12

Merid. WMT N.F. Deschutes State OR

CORNER DIAGRAM



DESCRIBE CORNER MONUMENT FOUND

SF/NF

DESCRIBE BEARING TREES OR OTHER OFFICIAL ACCESSORIES FOUND

PHOTO IDENTIFICATION DATA

Photo No. _____

Filed At. _____

Object Ident. _____

Ident. By _____

Signature

7

A 16" fir snag bears N60°E at 11.5 feet, with a chopped open blaze and scribing visible.
A 23" fir snag (burnt) bears S30°W at 19.0 feet, with scribing visible.
A 15" fir snag bears N18°W at 9.6 feet with a healed over blaze.
There was decayed and rotted material in the SE location.

DESCRIBE CORNER LOCATION RELATIVE TO NEAR-BY FEATURES, ALSO HOW TO REACH CORNER

PLANE COORDINATE POSITION DATA

State _____ Zone _____

X _____

Y _____

Estab. By _____

Agency

8

Signature

Walt Miller

Title

PLS

Division

CS

Headquarters

SO

Date

9/99

FS-7100-52 (3/68)

4

5

USDA-FOREST SERVICE

Index

File No. 2155

CORNER RECORD (SEARCH)

(Ref. FSM 7151.4)

Tract or

Survey No. _____

Cor.

No. E-21

T 21 S R. 6 E.

R.D. Bend

County Deschutes

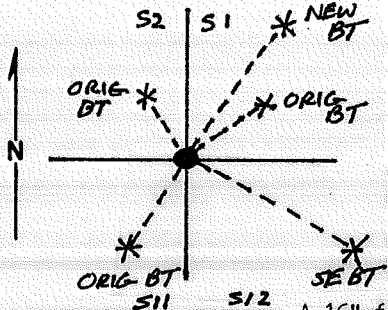
NW Sec. 12

Merid. WMT

N.F. Deschutes

State OR

CORNER DIAGRAM



DESCRIBE CORNER MONUMENT FOUND

SF/NF

DESCRIBE BEARING TREES OR OTHER OFFICIAL ACCESSORIES FOUND

PHOTO IDENTIFICATION DATA

Photo No. _____

Filed At. _____

Object Ident. _____

Ident. By _____

Signature

PLANE COORDINATE POSITION DATA

State _____ Zone _____

X _____

Y _____

Estab. By _____

Agency

A 16" fir snag bears N69°E at 11.5 feet, with a chopped open blaze and scribing visible.
 A 23" fir snag (burnt) bears S30°W at 19.0 feet, with scribing visible.
 A 15" fir snag bears N18°W at 9.6 feet with a healed over blaze.
 There was decayed and rotted material in the SE location.

DESCRIBE CORNER LOCATION RELATIVE TO NEAR-BY FEATURES, ALSO HOW TO REACH CORNER

Signature

Walt Miller

Title

PLS

Division

CS

Headquarters

SD

Date

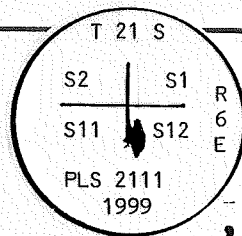
9/99

FS-7100-52 (3/88)

CORNER RECORD (PERPETUATION)

MONUMENT: DESCRIBE NEW MONUMENT SET, OR WORK DONE TO PRESERVE EXISTING MONUMENT

I established the corner using record bearing and distances from the original calls because some distances did not intersect, I further used the faces of the blaze to pull distances as this made for a tighter pattern from which to set the new monument.



ACCESSORIES: DESCRIBE NEW BT'S WITNESS OBJECTS ETC. ESTABLISHED, OR WORK DONE TO PRESERVE EXISTING EVIDENCE

I set a 2½" X 30" Aluminum Capped Aluminum Pipe Rising 2 " above ground in a rock collar from which I established 2 new accessories being:
 A 5" Fir bears S59°E at 79.0 feet, marked X BT
 A 23" Fir bears N49°E at 64.7 feet, marked T21SR6ES1BT.
 The Meander Corner to Sections 1 and 12 on the West end of Lilly Lake bears S87°E at 53.9 feet and is marked with a 2½" X 30" Aluminum Capped Aluminum Pipe.

Work Done By Walt Miller Title PLS Date 9/99 State Registration No. 2111
 or Agency

Certified Cor. Record Prepared? (Yes) No Filed At: Deschutes Co. Date 9/22/99

HISTORY OF ORIGINAL CORNER AND/OR PREVIOUS RENEWALS:

7/11/1884 - H. Perkins, G.L.O. surveyor, under group No. 508, subdivided T21S, R6E and set the section corner common to sections 1, 2, 11, and 12 as follows:

Set a post 4 ft. long 4 ins. square 24 ins. in the ground for cor. to secs. 1,2,11 and 12 marked. T.21S. S.1 on NE. R.6E. S.12 on S.E. S.11 on S.W. and S.2 on the N.W. faces with 5 notches on S. and one notch on E. edges from which,

A fir 12 in. diam. bears N.70°E. 17 lks. dist. marked T.21S.R.6E.S.1 B.T.

A fir 16 in. diam. bears S.56°E. 27 lks. dist. marked T.21S.R.6E.S12 B.T.

A fir 24 in. diam. bears S.30°W. 27 lks. dist. marked T.21S.R.6E.S.11 B.T.

A fir 12 in. diam. bears N.26°W. 13 lks. dist. MARKED T.21S.R.6E. S.2 B.T.

Index File No.

2155

21

6

GPO: 1986 O-439-095

12
E-21 13

USDA-FOREST SERVICE

Index

File No. _____

CORNER RECORD (SEARCH)

(Ref. FSM 7151.4)

Tract or

Survey No. _____

Cor.

No. E-2 / MC

T 21 S R. 6 E

R.D. Bend

County Deschutes

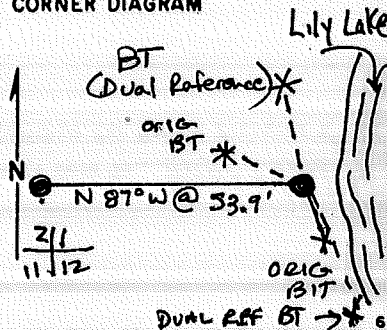
MC for Sec 1/12

Merid. WMT

N.F. Deschutes

State OR

CORNER DIAGRAM



DESCRIBE CORNER MONUMENT FOUND

Found 20" fir S30°W at 11.9 feet, standing dead tree with a healed over blaze. 2
 Found 8" fir N80°W at 6.6 feet, standing dead tree with a healed over balze. 2
 No sign of the post.

PHOTO IDENTIFICATION DATA

Photo No. _____
 Filed At. _____
 Object Ident. _____
 Ident. By _____
 Signature _____ 7

DESCRIBE CORNER LOCATION RELATIVE TO NEAR-BY FEATURES, ALSO HOW TO REACH CORNER

PLANE COORDINATE POSITION DATA

State _____ Zone _____
 X _____
 Y _____
 Estab. By _____
 Agency _____ 8

Signature
Walt Muller

Title
PLS

Division
CS

Headquarters
SD

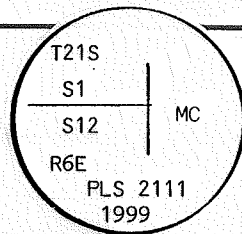
Date
9/99

FS-7100-52 (3/88)

CORNER RECORD (PERPETUATION)

MONUMENT: DESCRIBE NEW MONUMENT SET, OR WORK DONE TO PRESERVE EXISTING MONUMENT

Using a distance-distance intersection with record GLO distances from the faces of the original bearing trees; I set a 2½" X 30" Aluminum Capped Aluminum Pipe flush in the ground 1 foot from the west bank of Lily Lake, in a small rock collar..



ACCESSORIES : DESCRIBE NEW BT's WITNESS OBJECTS ETC. ESTABLISHED, OR WORK DONE TO PRESERVE EXISTING EVIDENCE

The Section Corner common to Sections 1, 2, 11, and 12 bears N87°W at 53.9 feet. (GLO Record is N89° 41'W at 87 lks. or 57.4 feet.)

Due to fire in the area of the corner as well as bug kill, there were no available trees to blaze and scribe to replace the dead original trees. I therefore will call the two new trees that were scribed for the section corner of sections 1, 2, 11, and 12 as follows:
 A 23" fir bears N07°W at 45.1 ft., marked T21SR6ES1BT. (This BT References the Sec. Cor.)
 A 5" fir bears S21°E at 39.8 ft., marked X BT (BT references the Sec. Cor.)

Work Done By Walt Muller Title PLS Date 9/99 State Registration No. 2111
 or Agency

Certified Cor. Record Prepared? Yes No Filed At: Daschle County Date 9/22/99

REMARKS

7/11/1884 - H. Perkins, G.L.O. surveyor, under Group No. 508, subdivided T21S,R6E and set the Meander Corner for Sections 1 and 12 on the West side of Lily Lake as follows:
 West bank of lake. Set a post 4 ft. long 4 ins. square 24 ins. in the ground for Meander cor. to fractional secs. 1 and 12 marked. M.C.T.21S. on W. R.6E. S.1 on N and S12 on S faces from which
 A fir 6 in. diam. bears N.80°W. 10lks. dist. marked T.21S.R.6E. S.1 M.C.B.T.
 A fir 20 in. diam. bears S.30°W. 18 lks. dist. marked T.21S.R.6E.S.12 M.C.B.T.

Index File No. 212 T. 21 R. 6 M. Tract or Surv. No. Cor. E-21 N.C.
 GPO: 1986 O-439-095

Index
File No. 2555 CORNER RECORD (SEARCH) Contract or
(Ref. FSM 7151.4) Survey No. Cor. No. E-25
T 21 S. R. 6 E. R.D. BEND County DESCHUTES STD Cor. of
Merid. WILLAMETTE N.F. DESCHUTES State OREGON Section 7/6

SEE: E-01 T. 21 S., R. 7 127
E. W.M.

Δ B Ts
ca 1968

Index File No. 2559 CORNER RECORD (SEARCH) Contract or Survey No. J-25
(Ref. FSM 7151.4)
T 21 S. R. 6 E. R.D. BEND County DESCHUTES STD Cor. of
Merid. WILLAMETTE N.F. DESCHUTES State OREGON Section 12 7

SEE: J-01 T. 21 S., R. 7 E. 18 W.M.

J B/S
ca 1968

Index
File No. 2563 CORNER RECORD (SEARCH) Contract or
(Ref. FSM 7151.4) Survey No. _____ Cor. No. N-25
T 21 S. R. 6 E. R.D. BEND County DESCHUTES STD Cor. of
Merid. WILLAMETTE N.F. DESCHUTES State OREGON Section 13 | 18

SEE: N-01 T. 21 S., R. 7 E. W.M.

A B T S
ca 1968

Index
File No. 2567 CORNER RECORD (SEARCH) Contract or
(Ref. FSM 7151.4) Survey No. Cor. No. R-25
T 21 S. R. 6 E. R.D. BEND County DESCHUTES STD Cor. of
Merid. WILLAMETTE N.F. DESCHUTES State OREGON Section 24 | 19

SEE: R-01 T. 21 S., R. 7 E., W.M.

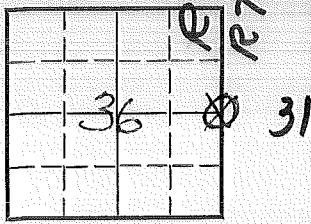
A
BTS
ca 1968

LAND CORNER RECORD

X-25 5680-2

1. T. 21S, R. 6E, No. X-25 Cor. 1/4 Mer. Will State OREGON (Rectangular) N. F. DESCHUTES Dist. BEND

2. Corner Status



3. Original Description _____ Vol. _____ Page _____ Where Recorded _____

4. Description of Corners:

7. Photo Identification

Photo No. _____
Ident. By: _____

8. Plane Coordinate Position Data

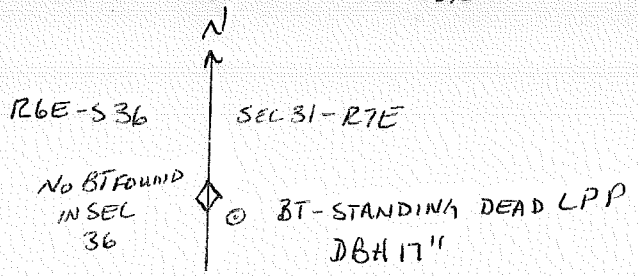
State _____ Zone _____
X _____
Y _____
Estab. By _____
Field Book No. _____
Where Filed _____

9. Evaluation

Authentic _____
Needs Verif. _____ Monument _____
Re-estab. _____ Survey _____
Land Status _____

5. Investigation Notes:

NO CORNER MONUMENT FOUND.
1/4 COR B.T. FOUND AS DESCRIBED IN FOLLOWING DIAGRAM — ALSO SEE
LAND CORNER RECORD FOR SEC COR IN SE COR



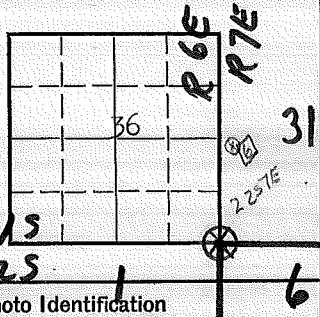
6. Signed P. SHOEMAKER Title FORESTER Date 9-21-65

LAND CORNER RECORD

2-25 5680-2

1. T 21S R 6E No. Z-25 Cor. Sec. Mer. W. State Oregon (Rectangular) N. F. Deschutes Dist. Crescent

2. Corner Status



7. Photo Identification

Photo No. _____
Ident. By: _____

8. Plane Coordinate Position Data

State _____ Zone _____
X _____
Y _____
Estab. By _____
Field Book No. _____
Where Filed _____

9. Evaluation

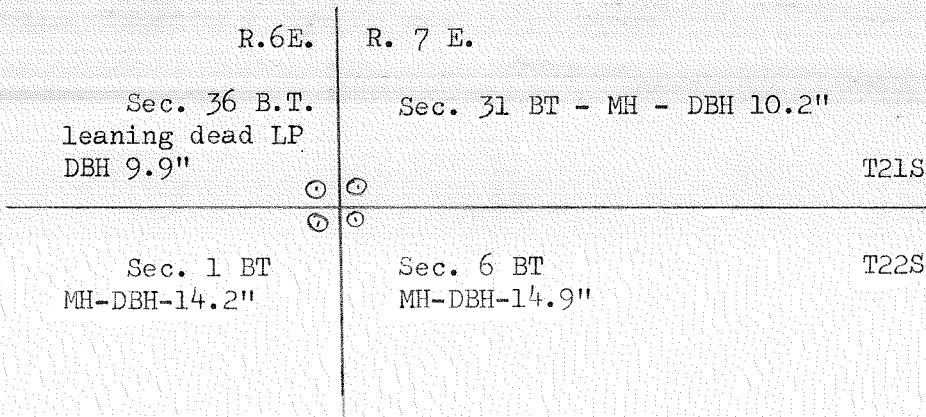
Authentic _____
Needs Verif. _____ Monument _____
Re-estab. _____ Survey _____
Land Status _____

3. Original Description _____ Vol. _____ Page _____ Where Recorded _____

4. Description of Corners:

No corner monument found

5. Investigation Notes: Sec. cor. B.T.'S found as described in the following diagram.



6. Signed Philip Shoemaker Title Forester Date 9-21-65

Index _____
File No. _____

CORNER RECORD (SEARCH) _____
(Ref. FSM 7151.4)

Contract or _____ Cor. No. _____
Survey No. _____

T _____ S. R. _____ E. R.D. _____ County _____ Cor. of _____
Merid. WILLAMETTE N.F. DESCHUTES State OREGON Section _____

SEE: _____ T. _____ S., R. _____ E. W.M.